

V03 Cabinet Making (Basic Course)



1. Final Task Assignment

Using a plan to be provided on the day of the competition, contestants will craft a box and its lid.

The provided elements will already be partly machined.

The box shall be assembled using dovetail joints, with its bottom locked into position by grooves.

The lid shall be assembled using mitered mortise and tenon joints.

All the fabrication details will be revealed on the day of the competition.

Types of wood to be used:

- Sides, front and back of the box: cherry wood.
- Bottom: 6mm plywood.
- Top: mullions and transoms in sycamore wood.
- Panel: 5mm Plexiglas.

2. Allocated time: 5h30

5 hours and 30 minutes of competition.

3. Requirements

- Contestants must respect the safety rules.
- All the parts will already be partly machined (wood-bending, grooves, mortises). Contestants will perform the tracing, assemble the parts by hand, install them and finally perform the sanding.
- Contestants will manage their time in order to complete the box within the allocated time. It is strongly recommended to perform the assembling and the gluing of the parts before the lunch break so that the contestants may then remove the clamps and complete their work.
- If any defects are found, contestants can have the parts replaced before the beginning of the competition. Two (2) points will be deducted for any replacements requested once the competition has begun. Furthermore, contestants may only request the replacement of 2

parts maximum.

- Contestants are allowed to use a quick-setting glue.
- The jury will inspect the contestants' toolboxes before the competition. Any tool not referenced in chart n°6 from the pre-task assignment (electric drill, sander machine...) which may cause safety concerns or give a clear advantage to its user will be removed.
- Any contestant caught cheating, talking to someone from the public or using a communication device will suffer a penalty of 5 points for the first transgression. A second transgression will lead to an exclusion from the contest.

4. Procedure

Both V02 Cabinet Making (Advanced Course) and V03 Cabinet Making (Basic Course) will take place on the same contest stand.

Day -1 (March 24th): On the day before the competition, contestants from both V02 and V03 contests will be welcomed on the contest stand by members of the jury. A briefing about the organization of the competition and the safety rules will be arranged. The jury will perform an inspection of each contestant's toolbox.

Day 1 (March 25th): Contestants will go on an organized trip.

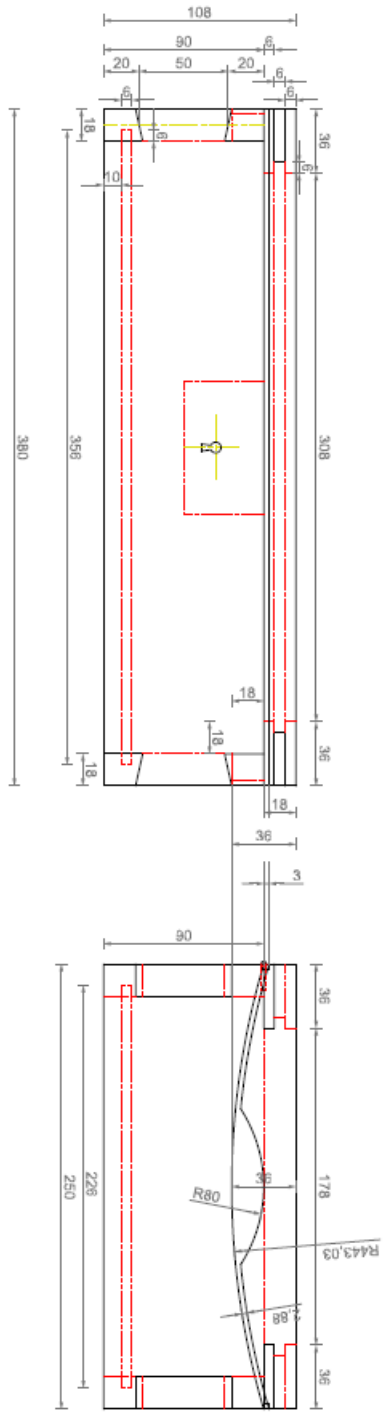
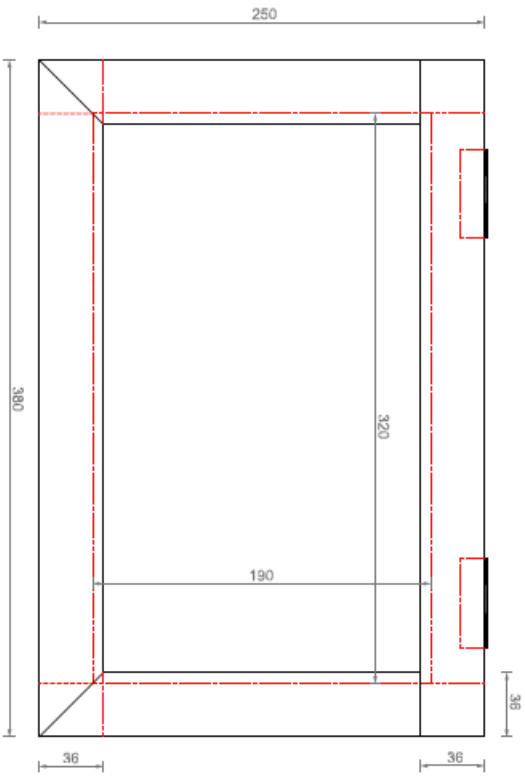
Day 2 (March 26th): Contestants will have 5 hours and 30 minutes to complete the task.

N°	5. Evaluation criteria	Scoring scale
01	Respect of the dimensions D1 (± 1 mm)	5
02	Respect of the dimensions D2 (± 1 mm)	5
03	Respect of the dimensions D3 (± 1 mm)	5
04	Quality and precision of the assembly A1	5.5
05	Quality and precision of the assembly A2	5.5
06	Quality and precision of the assembly A3	5.5
07	Quality and precision of the assembly A4	5.5
08	Quality and precision of the assembly A5	5.5
09	Quality and precision of the assembly A6	5.5
10	Quality and precision of the assembly A7	5.5
11	Quality and precision of the assembly A8	5.5
12	Squareness of the box (± 1 mm)	2

13	Squareness of the lid (± 1 mm)	2
14	Planimetry of the box (± 1 mm)	1
15	Planimetry of the lid (± 1 mm)	1
16	General quality of the sanding of surfaces	5
17	Quality of the smoothing of the edges	2
18	General aspect of the box	9
19	General aspect of the lid	9
20	General aspect of the final result (box and lid)	6
21	Materials, replacement requests	4
TOTAL POINTS		100



Abi wishes you a good competition!



Cigare's box